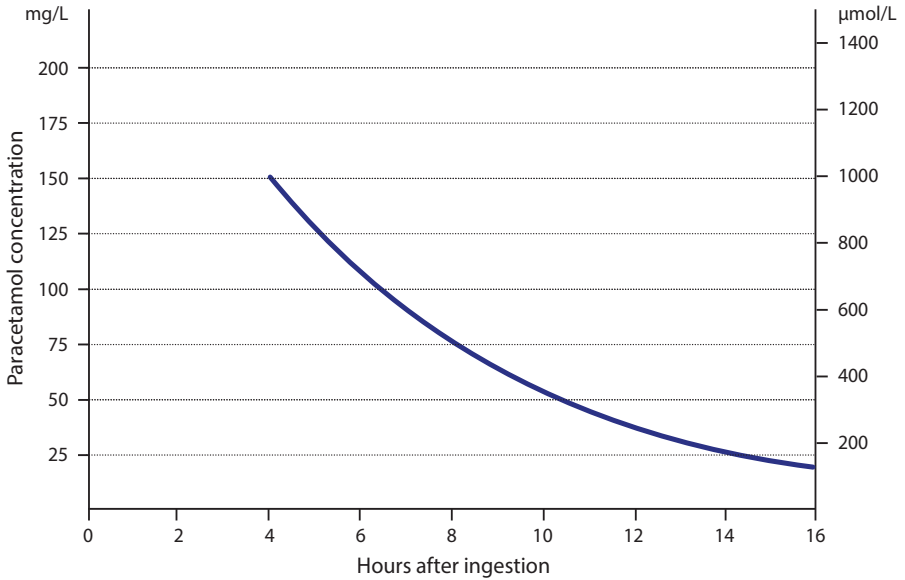


Paracetamol poisoning treatment nomogram



Take care to use the relevant paracetamol concentration units.

Valid for use in acute single ingestion of paracetamol only; for multiple ingestions or ingestions of modified release paracetamol products, seek toxicologist advice.

Validated to 15 hours only. Samples showing concentrations above the treatment line after 15 hours are probably significant; it is not clear how to interpret a concentration just below the line taken after 15 hours.

Late presentations require assessment of risk factors for hepatic toxicity and consideration of confidence about the time of ingestion. If potential for toxicity exists, treat with acetylcysteine and observe.